



# COMPANY PROFILE

📍 11 Shofunwa Estate, Shofunwa Estate, Ikorodu Lagos

☎ +234 806 745 8442, +234 906 903 2264

✉ [randcmegaglobalresources@gmail.com](mailto:randcmegaglobalresources@gmail.com)

# Company Overview

R and C Mega Global Resources Limited is a diversified conglomerate strategically positioned across critical sectors including Real Estate Development, Financial Services, Education, Agriculture, Logistics, and Community Empowerment. With its corporate headquarters located at No 7 Fatai Durosimi Etti, Off Ligali Ayorinde Street, Victoria Island, Lagos State, R and C Mega Global Resources Limited leverages innovation, strategic partnerships, and a strong commitment to excellence, sustainability, and socio-economic impact.



# Mission

To consistently deliver innovative, sustainable, and impactful solutions that empower communities, drive economic growth, and create lasting value for our stakeholders.



# Vision

To become a leading multi-sector conglomerate renowned for innovation, integrity, and sustainable growth across Africa.



## Business Sectors

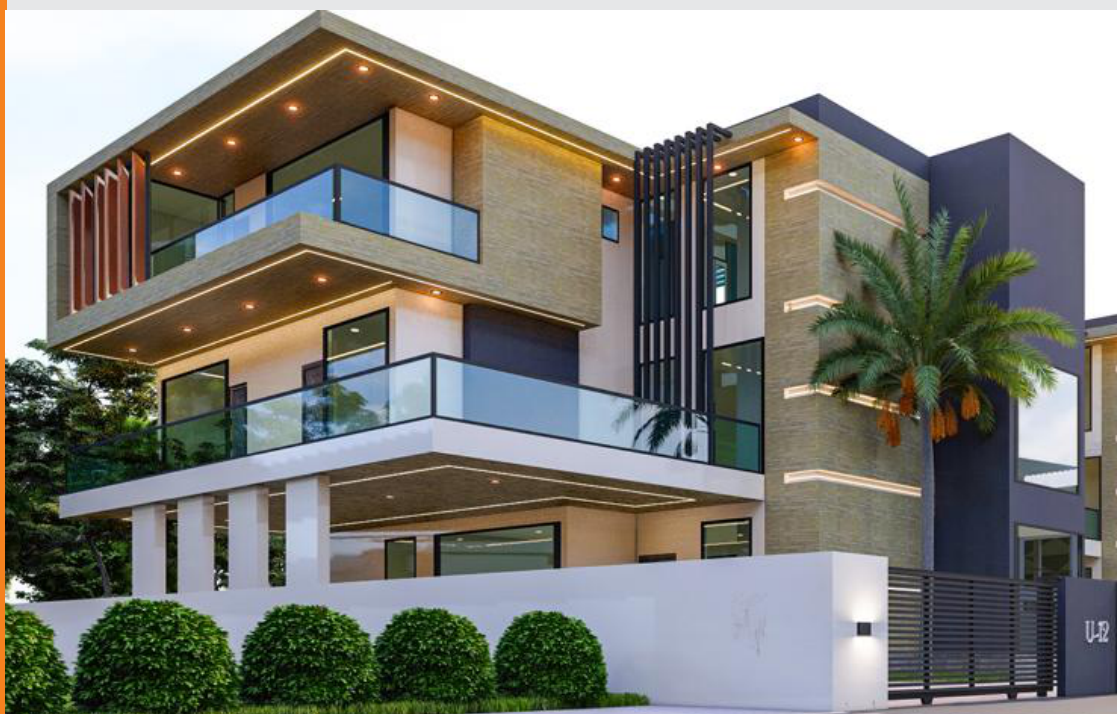
R and C Mega Global Resources Limited Real Estate Development acquires, develops, and markets premium properties, primarily in Lagos:

### I. **Magnolia Court Ogombo** – A Signature MSR Group Development

Magnolia Court Ogombo is a landmark residential development by R and C Mega Global Resources Limited setting a new benchmark for luxury living in Lagos. Officially launched with a prestigious groundbreaking event attended by our directors, partners, and investors, Magnolia Court reflects our unwavering commitment to delivering premium real estate solutions.

Strategically located in the heart of Ogombo, this upscale estate offers a blend of elegance, comfort, and smart investment value.

With a flexible payment plan starting from just a 30% initial deposit and the balance spread over 12 months, Magnolia Court presents an unmissable opportunity for homeowners and investors alike.





## Property Options

R and C Mega Global Resources Limited Real Estate Development acquires, develops, and markets premium properties, primarily in Lagos:

- 2-Bed Luxury Apartment – N85M
- 3-Bed Luxury Apartment – N100M
- 4-Bed Terrace Duplex – N150M

## Key Features

- Prime location with easy access to major landmarks
- Government-approved land title
- Top-tier infrastructure and modern facilities
- Serene and secure residential environment

## Magnolia Court Ogombo is more than a home —it's a lifestyle.

Whether you're investing or moving in, this development exemplifies the quality and excellence that defines R and C Mega Global Resources Limited real estate portfolio



**Business Sectors (Contd.)****ii. Groove Court Phase 1****Redefining Luxury Living in Lekki**

Groove Court Phase 1 is a flagship residential development by R and C Mega Global Resources Limited designed to set a new benchmark for modern luxury living in Lagos. Located in the prestigious Lekki Phase 1, this exquisite estate offers a perfect blend of comfort, style, and investment value.

Whether you're a first-time home buyer or a seasoned investor, Groove Court Phase 1 offers the ideal environment to raise a family or generate consistent rental income, with high demand for short-let and long-term occupancy.

**Available Units:**

- 2-Bedroom Apartment – ₦165,000,000
- 3-Bedroom Apartment – ₦185,000,000
- Flexible Payment Plan: Up to 6 months



**Business Sectors (Contd.)****Estate Features:**

- 24/7 Power Supply
- Advanced Security Systems
- Modern Elevators
- Swimming Pool
- Fully Equipped Gym
- Smart Home Features
- Children's Playground
- Water Supply
- Drivers Lounge

**Proximity to Key Landmarks:**

- Spar Supermarket
- VFS Global Visa Application Center
- Circle Mall
- House on the Rock Church
- Nikon Town

Groove Court Phase 1 is more than a residential address. it's a lifestyle choice and a smart investment.

With R and C Mega Global Resources Limited reputation for excellence, this project delivers unmatched quality, design, and long-term value



**Business Sectors (Contd.)****III. Groove Court Phase 2****Luxury Living in the Heart of Lekki**

Groove Court Phase 2 is an exceptional real estate project by R and C Mega Global Resources Limited designed for those who desire prestige, comfort, and a vibrant urban lifestyle.

Ideally situated on Admiralty Road, Lekki Phase 1, this development is a perfect blend of elegance and functionality, making it a top choice for discerning homeowners and investors.

Currently selling off-plan, Groove Court Phase 2 offers attractive pricing and a great opportunity for early investors to secure high-value assets in one of Lagos's most desirable locations

**Property Options**

2-Bedroom Luxury Apartment – ₦250M

3-Bedroom Luxury Apartment – ₦280M

**Premium Amenities:**

- 24/7 Electricity & Security
- Fully Equipped Gym
- CCTV Surveillance
- Recreational Facilities
- Well-Planned Road Network
- Steady Water Supply

**Property Options**

- 2-Bedroom Luxury Apartment – ₦250M
- 3-Bedroom Luxury Apartment – ₦280M

**Premium Amenities:**

- 24/7 Electricity & Security
- Fully Equipped Gym
- CCTV Surveillance
- Recreational Facilities
- Well-Planned Road Network
- Steady Water Supply





**Business Sectors (Contd.)****IV. Apple Island Estate:**

A luxurious 250-acre waterfront island estate in Lagos Lagoon, featuring exclusive villas, townhouses, and apartments, offering modern amenities, sustainable living practices, and unmatched luxury

**2. R and C Mega Global Resources Multipurpose Cooperative**

Partnering with Parralex Bank, R and C Mega Global Resources Multipurpose Cooperative offers diverse financial solutions aimed at economic empowerment:

**SME Business Loans:**

Tailored loans for entrepreneurs, small businesses, and civil servants.

**Agro Fund Program:**

Financial and technical support for agricultural businesses, enhancing productivity and market access.

**Youth & Student Empowerment:**

Comprehensive training, mentorship, and financial support for youth, fostering digital literacy and entrepreneurial skill development



### 3. R and C Mega Global Resources Academy

R and C Mega Global Resources Academy focuses on professional real estate education, offering:

- Training for aspiring realtors, property developers, and industry professionals.
- Comprehensive courses covering property management, sales strategies, investment analysis, and sustainable development.
- Internship and mentorship opportunities for practical experience and industry readiness.



#### 4. R and C Mega Global Resources Agriculture

R and C Mega Global Resources Agriculture engages in extensive agricultural production and export activities, including:

- **Dairy Farming:** Sustainable dairy production, contributing significantly to local and international markets
- **Cash Crops Farming:** Export-oriented cultivation of cocoa, cashew, sesame seeds, and other premium cash crops

Robust export operations adhering to international quality standards and certifications, boosting Nigeria's agricultural presence globally





## 5. R and C Mega Global Resources Haulage & Logistics

R and C Mega Global Resources Haulage & Logistics provides specialized trucking services, particularly catering to major corporate entities such as Dangote Cement Plc and BUA Cement Company. Key competitive advantages include

- Technological innovation via advanced load sensor systems for real-time logistics management.
- Emphasis on driver training, strict maintenance schedules, and comprehensive operational oversight.
- Emphasis on driver training, strict maintenance schedules, and comprehensive operational oversight.





## 6 R AND C MEGA GLOBAL RESOURCES LTD.

R and C Mega Global Foundation, the philanthropic arm of R and C Mega Global Resources Limited, established on January 2025, is committed to creating substantial community impact by:

- Providing financial aid and skill development opportunities to vulnerable women, youths, and marginalized groups
- Organizing health care support services, community empowerment initiatives, and environmental sustainability projects
- Hosting impactful programs such as "Empowered Hearts," aimed at fostering personal growth, independence, and community connections through capacity-building initiatives, vocational training, direct financial support, and festive outreach events.



## Strategic Partnerships

The logo for trucki, featuring the word "trucki" in a bold, sans-serif font. The "t" and "r" are dark blue, the "u" is orange, and the "cki" is dark blue.The logo for MAEC, featuring a white line-art illustration of a classical building with columns and a pediment, positioned above the word "MAEC" in a white, serif font.The logo for STRONG TOWER Capital Limited, featuring a stylized blue and orange graphic of a tower or building, followed by the text "STRONG TOWER" in a bold, sans-serif font, and "Capital Limited" in a smaller, italicized font below it.The logo for bravewood, featuring a large, white, stylized lowercase letter "b" on a dark blue background, with the word "bravewood" in a white, sans-serif font below it.The logo for ZENITH, featuring a large, stylized "Z" in grey and red, with the word "ZENITH" in a bold, sans-serif font below it.

## Corporate Values

**Integrity**

**Innovation**

**Excellence**

**Sustainability**

**Community Impact**



### Commitment to Sustainability

R and C Mega Global Resources Ltd integrates sustainable practices across its operations, prioritizing environmental stewardship, social responsibility, and economic resilience.





## Management Team



**Gbenga Olaniyi**  
Executive Director



**Bakare Oluwaseyi Sunday**  
MD/CEO



**Mr. Adewunmi Damilola**  
Admin/HR Manager



**Engr. Aderibigbe Seye**  
Head of Operations